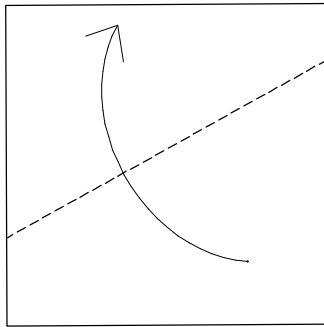


Sunrise

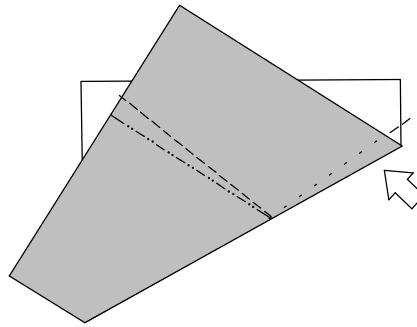
© 1998 Sy Chen

Designed on 10/24/98 and diagrammed on 10/20/99
6" square produces 6" wide model

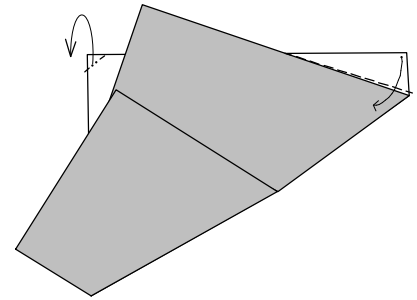
1. Start from duo-color square with sun color up; There is no reference point. Make it somewhat look like next step.



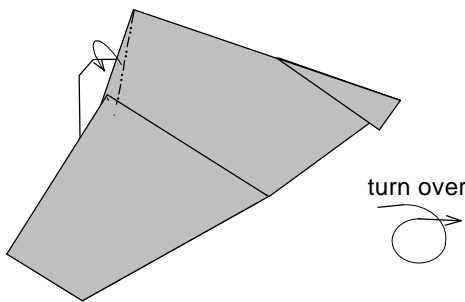
2. Swivel by changing folded edge slightly



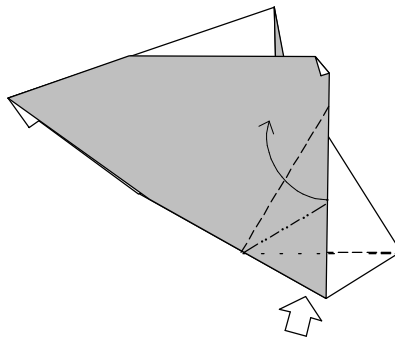
3.



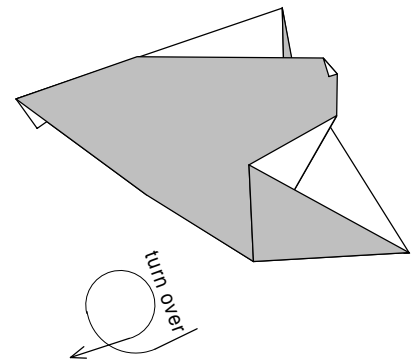
4. Mountain fold the edge while squash pleated edge behind



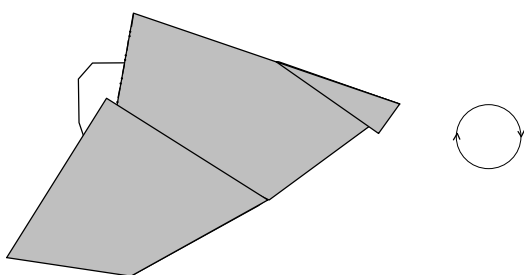
5. Squash



6.



7. Rotate



8. Finished; Shape to your own taste

