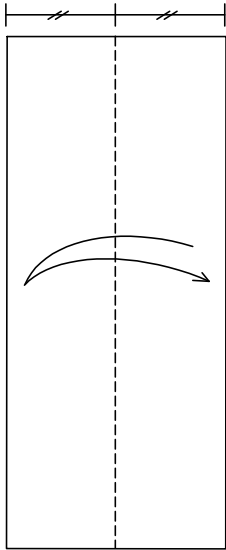


# \$ Graduation Gown

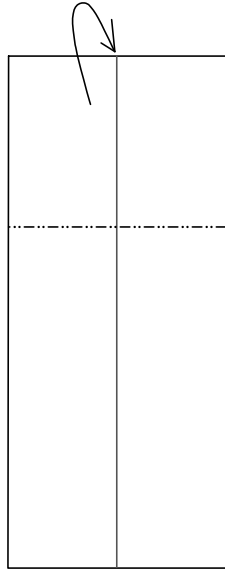
© 2012 Sy Chen

Designed on 6/5/2012 and diagrammed from 6/7/2012 to 6/8/2012  
Finished model height is about 2/3 of the dollar bill length.

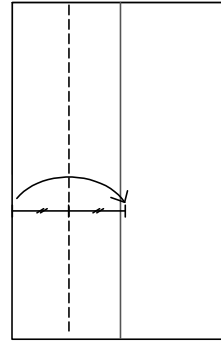
1. Start from a US dollar bill .



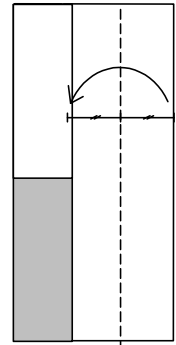
2. Mountain fold. The line location is about 1/3 of the dollar bill length.



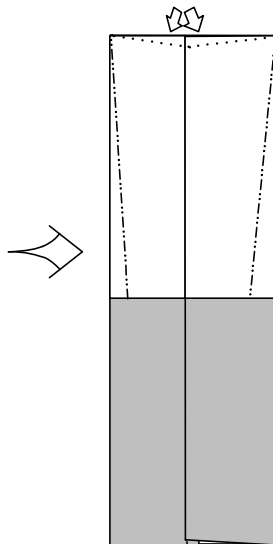
3. Bring the left edge to the right slightly beyond the center crease.



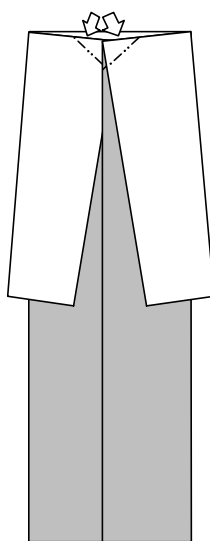
4. Fold the right edge to the left so both sides overlap near the center.



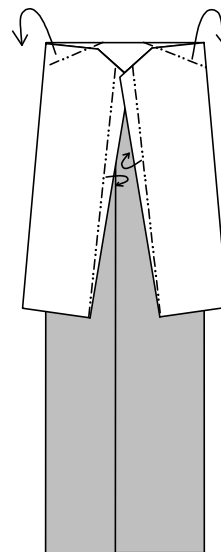
5. Two folded flaps overlap near the center; Slightly shift the edges to form sleeves.



6. Inside reverse 2 inner corners.



7. Mountain folds.



8. Finished.

